

**ON LINE. ON GRADE.  
EVERY TIME.**



The patented, one-man instrument to take you from engineer's offset to finished ditches — quickly and accurately.

No other instrument does it as easily as Flo-Line™ by Trench Shoring Company. Because Flo-Line was developed, patented and manufactured specifically for heavy pipeline builders, You'll get position, depth and grade of pipeline precisely and easily.

### **Flo-Line Saves You Money**

- One man set-up
- Saves time, set-up in minutes
- No additional tools needed

### **Accuracy, Accuracy, Accuracy**

- Constant measurement of line and grade
- Telescopic with built in tape and levels

### **Laser Compatibility**

- Ideal for setting up laser alignment systems
- Spot checks the laser system

### **Factory Support**

- Engineered and built at our Los Angeles California facility
- Backed by the dedicated team of Trench Shoring Company Professionals
- Off-the shelf availability
- Inventory of interchangeable replacement parts

Models: BFL 2' to 15' Offset

XFL 5' to 20' Offset

YFL 5' to 25' Offset

Weight: 35 to 100 lbs.

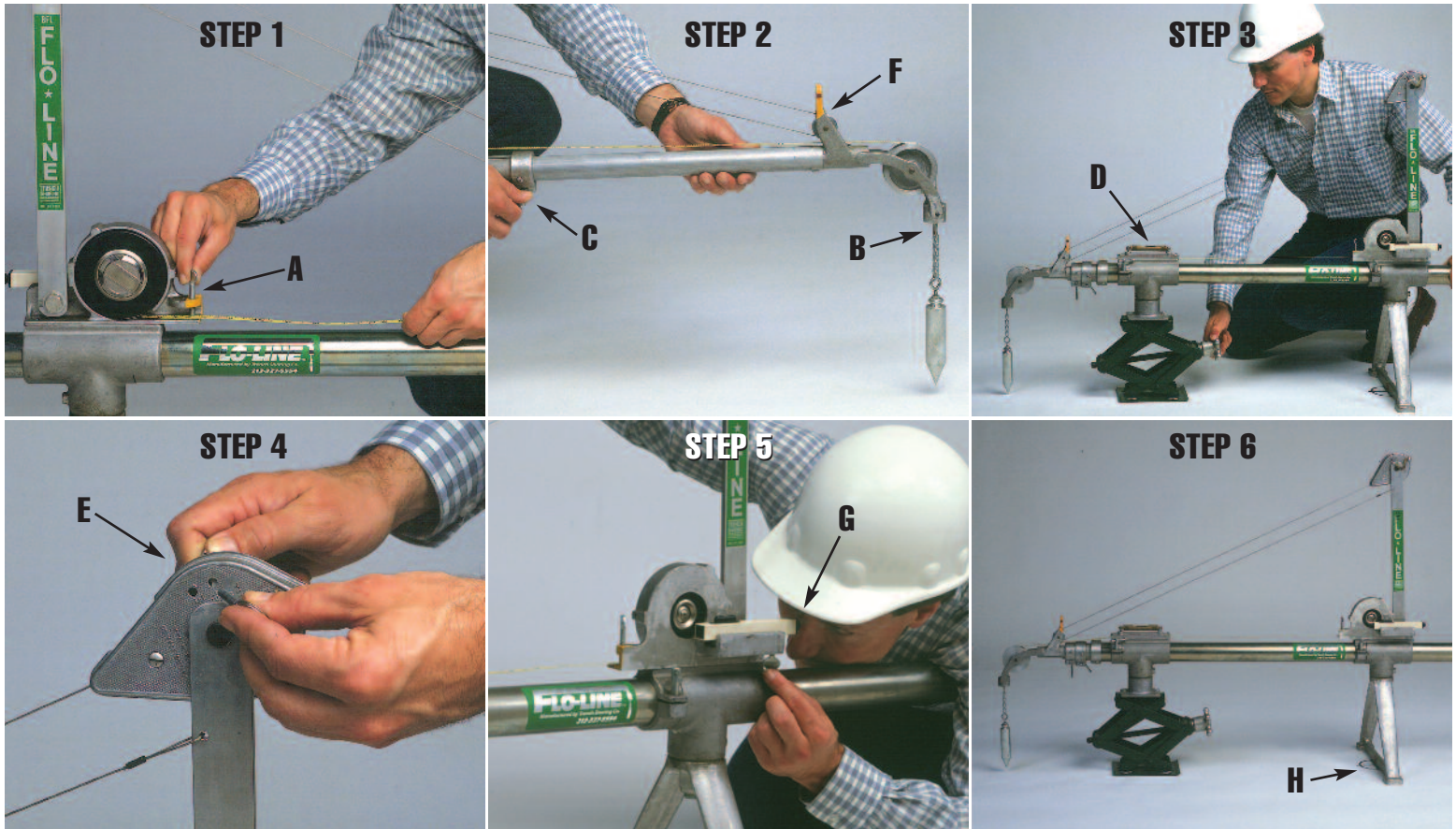


"Commitment To Safety & Service"  
Since 1973

**TrenchShoring.com**



# FLO-LINE SET UP PROCEDURE



This set up procedure is done only once unless the offset is changed.

- Step 1** Using built-in tape measure, set specified offset at point "A" (painted yellow). Example: for 10 ft. offset, lock tape at 10 ft. at yellow mark.
- Step 2** Extend telescopic tubes until tape is tight at nose piece, point "B". Tighten telescopic tubes at collar, point "C".
- Step 3** Find location where plumb bob will hang free and adjust scissor jack so that main level "D" reads level.
- Steps 4 & 5** To adjust sag at end of Flo-Line, take in cable slack at tension box, Step 4E. While raising target, Step 2F, (painted yellow with red line) sight through and level peep sight, Step 5G, so that hair line in peep sight and red line on target, Step 2F, are level. This procedure takes approximately two minutes when familiar with Flo-Line and need only be checked a few times during a shift. Flo-Line is ready to be used.
- Step 6** Triangular base (painted red), Step A, is placed on offset and Flo-Line is leveled at scissor jack. Add cut and offset together and extend tape with plumb bob into ditch until the added total of cut and offset appears at point "A", Step 1, and lock. With Flo-Line level the tip of the plumb bob is registering center line and flow line. (Example: 10' offset plus 15.33 cut—reads 25.33 at "A")

## OTHER WAYS TO BE USED

Should hike-ups be desired, simply deduct from cut. Should you wish subgrade simply add to cut. Flo-Line can be used to check the elevation of existing cross utilities to see if they interfere with the utility that is being installed. using Flo-Line like this eliminates guessing and lengthy delays. (Using cut, from engineer cut sheet, deduct diameter of new utility plus thickness of barrel from cut, lower plumb bob to adjusted elevation. This will give top of new pipe in relation to existing utility.)



"Commitment To Safety & Service"  
Since 1973

TrenchShoring.com

**LOS ANGELES**  
**BAKERSFIELD**  
**BANNING**  
**CORONA**  
**FRESNO**  
**FULLERTON**  
**LAKE FOREST**  
**MOORPARK**  
**SAN DIEGO**  
**LAS VEGAS**

636 East Rosecrans Ave. • Los Angeles, CA 90059 • (800) 423-4411 • (310) 327-5554  
301 Lawson Rd. • Bakersfield, CA 93307 • (855) 509-5900 • (661) 396-9160  
1184 W. Lincoln St. • Banning, CA 92220 • (800) 221-2030 • (951) 849-1611  
325 N. Cota St. • Corona, CA 92880 • (800) 457-4646 • (951) 734-4290  
88 N. Hughes Ave. • Fresno, CA 93706 • (866) 887-3909 • (559) 691-4123  
1400 E. Orangethorpe Ave. • Fullerton, CA 92831 • (800) 439-0987 • (714) 879-1005  
20542 Pascal Way • Lake Forest, CA 92630 • (800) 714-7244 • (949) 454-0858  
13826 Princeton Ave. • Moorpark, CA 93021 • (800) 805-2258 • (805) 529-4614  
9450 Dowdy Dr. • San Diego, CA 92126 • (800) 608-4422 • (858) 530-2500  
4035 Flossmoor St. • Las Vegas, NV 89115 • (866) 319-2053 • (702) 651-0920